

956 ELLIS STREET SAN FRANCISCO

PROPERTY SQ FT INFORMATION

MEASUREMENTS CALCULATED TO THE EXTERIOR WALLS

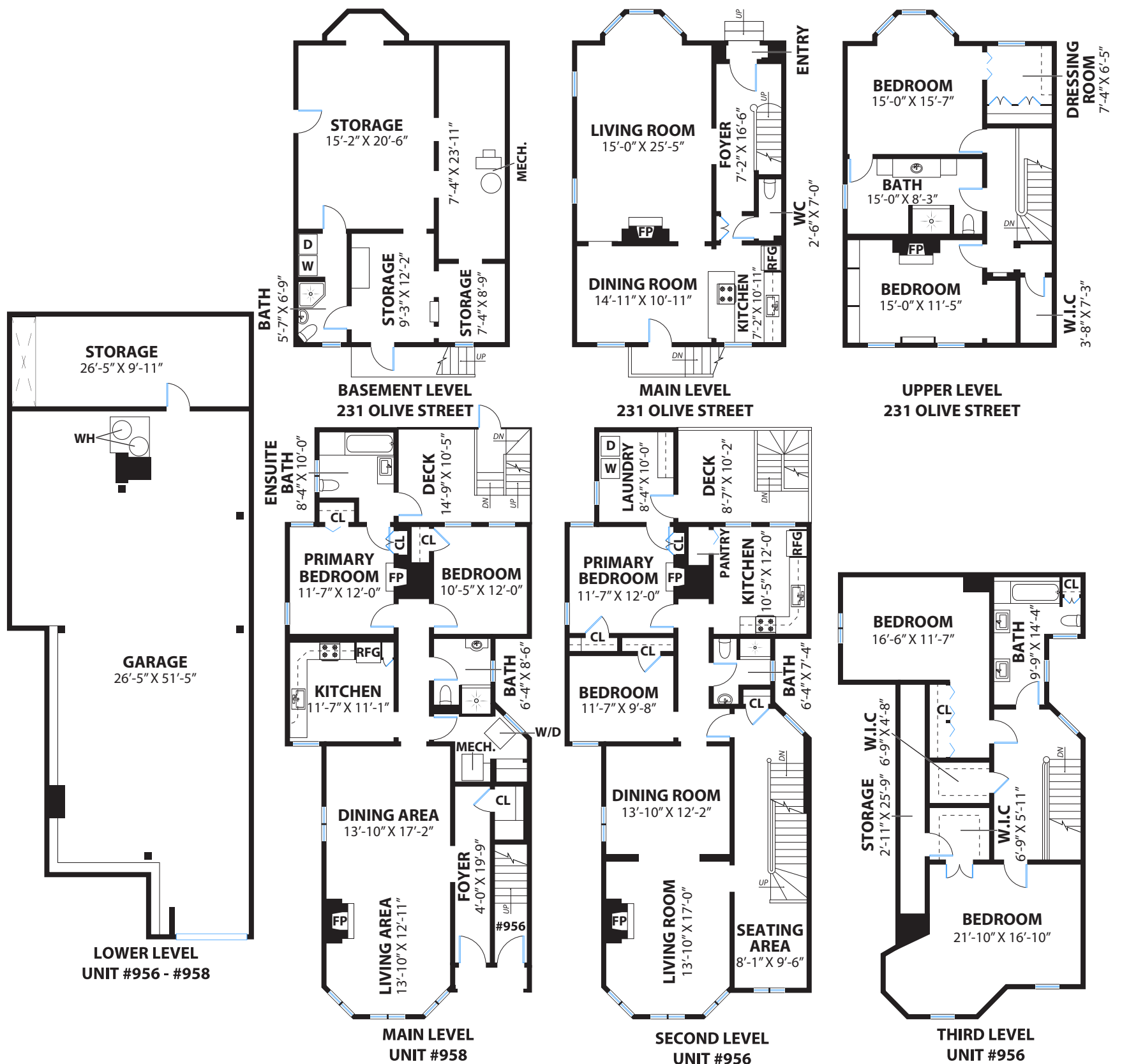
LIVING SPACE: 5544 SQ FT

- * Main House (Main Level Unit #958): 1354 Sq Ft
- * Main House (Second Level Unit #956): 1503 Sq Ft
- * Main House (Third Level Unit #956): 985 Sq Ft
- * Main House (Main Level - 231 Olive Street): 840 Sq Ft
- * Main House (Upper Level - 231 Olive Street): 862 Sq Ft

NON-LIVING SPACE: 2809 SQ FT

- * Deck (Main Level Unit #958): 110 Sq Ft
- * Deck (Second Level Unit #956): 110 Sq Ft
- * Lower Level - 956 Ellis Street: 1727 Sq Ft
- * Basement Level - 231 Olive Street: 862 Sq Ft

COMBINED: 8353 Sq Ft



PRESENTED BY : GERALD GUAY

DRE #: 01168485

DISCLAIMER: RENDERING BY OPEN HOMES PHOTOGRAPHY. ALL MEASUREMENTS ARE APPROXIMATE AND MAY NOT BE EXACT. DO NOT RELY ON THE ACCURACY OF THIS FLOOR PLAN WHEN DETERMINING THE PRICE OF A PROPERTY OR MAKING DECISIONS REGARDING BUYING OR SELLING OF PROPERTIES WITHOUT INDEPENDENT VERIFICATION.